

## ANT-4GCombo3

4G LTE MIMO + WIFI MIMO Antenna



### Outstanding Features

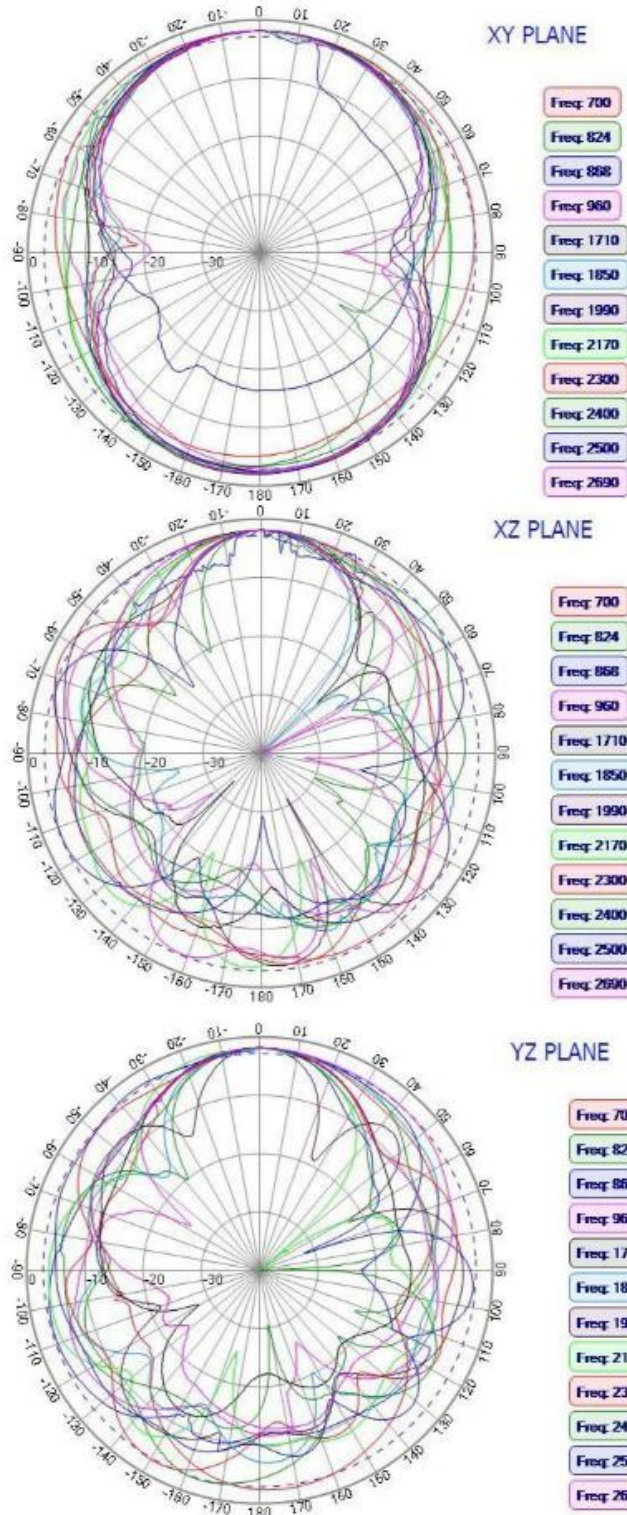
- **3-in-1 COMBO ANTENNA:** Combines 2x 4G LTE MIMO and 1x Dual-Band WiFi (2.4GHz & 5GHz) in one, ideal for enhancing cellular signals and extending WiFi coverage; Each RG174 Cable length 40cm (15.75 inch)
- **GLOBAL 4G LTE RANGE:** Works in most countries in the world with frequency range: 698~960MHz/1710~2690MHz; 2x 4G LTE antennas with SMA Male Connector.
- **DUAL BAND Wi-Fi:** Frequency range: 2400~2483.5MHz/4900~5825MHz; 1x Wifi antenna with RP-SMA Male Connector.
- **IP67 WATERPROOF:** Rated IP67 waterproof with an operating temperature range of -40°C to +85°C, designed to perform reliably in harsh outdoor environments.
- **COMPATIBLE ROUTERS:** Work with most 4G LTE cellular routers in the market with 2/3 antenna interfaces, like Linovision IOT-R32, Inhand IR302, Teltonika RUT241, RUT240 and so on.
- **APPLICATIONS:** Easy to install and use. Perfect for RVs, marine vehicles, remote IoT devices, surveillance systems, and industrial environments, ensuring reliable connectivity in various scenarios.

## Specification

Model	ANT-4GCombo3	
LTE Antenna	Frequency Range	698~960MHz/1710~2690MHz
	V.S.W.R	< 3.0
	Polarization	Linear
	Gain	2.5dBi (Zenith)
	Impedance	50Ω
LTE Antenna AUX	Frequency Range	698~960MHz/1710~2690MHz
	V.S.W.R	< 3.0
	Polarization	Linear
	Gain	2.0dBi (Zenith)
	Impedance	50Ω
WIFI Antenna	Frequency Range	2400~2483.5MHz/4900~5825MHz
	V.S.W.R	< 2.0
	Polarization	Linear
	Gain	3.0dBi (Zenith)
	Impedance	50Ω
Mechanical	Cable	RG174
	Connector	SMA or others
	Material	ABS
	Mounting Method	Screw
Environmental	Operating Temperature	-40°C~+85°C
	Relative Humidity	Up to 95%
	Ingress Protection	IP67 (exclude cable outlet)
	Vibration	10 to 55Hz with 1.5mm amplitude 2hours
	Environmentally Friendly	ROHS Compliant

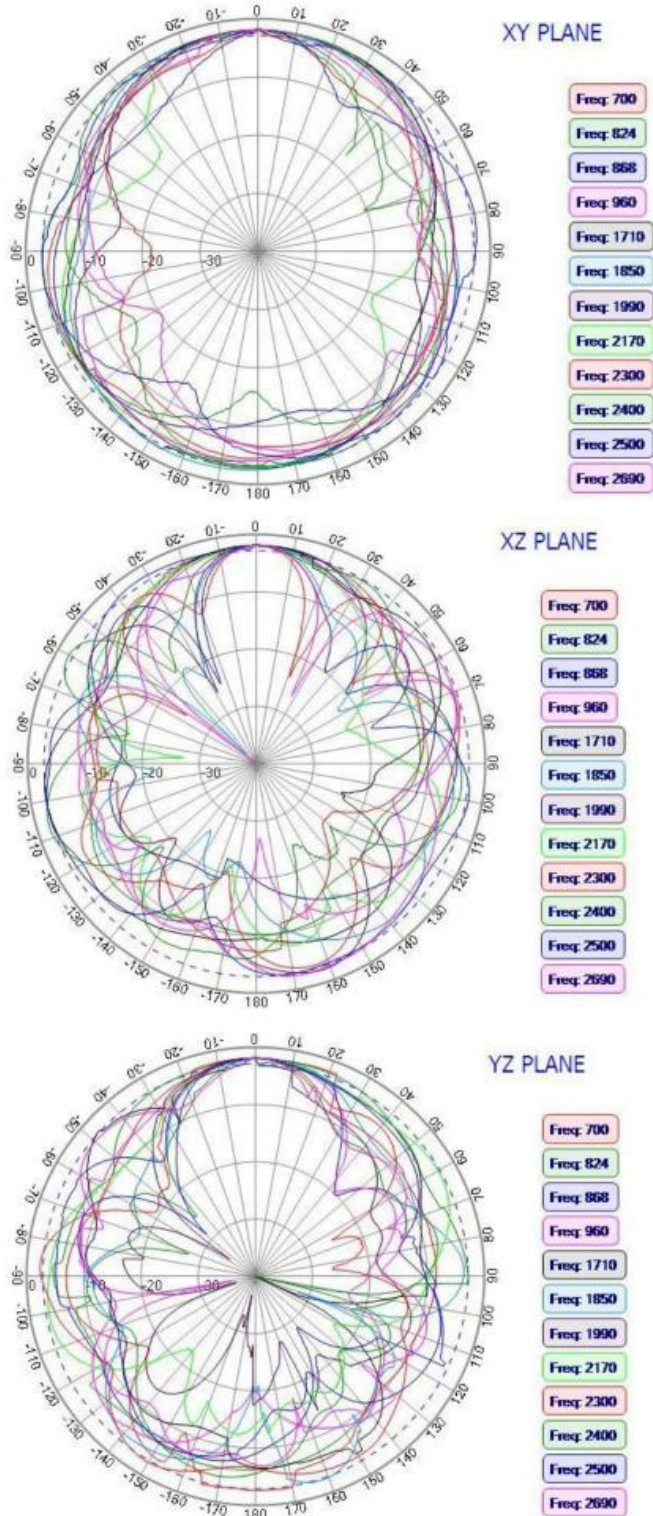
*\*Disclaimer: Technical specifications may subject to change without prior notice*

## LTE Antenna MAIN



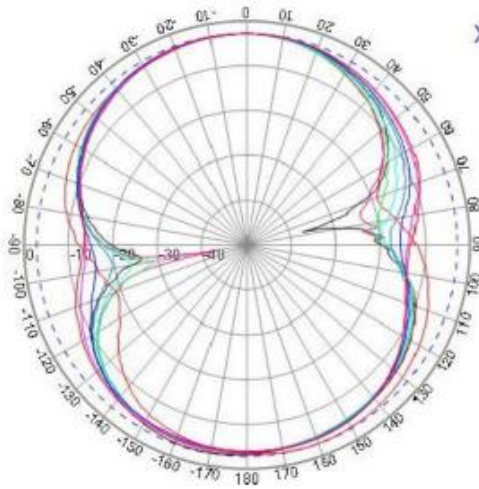
*\*Disclaimer: Technical specifications may subject to change without prior notice*

## LTE Antenna AUX



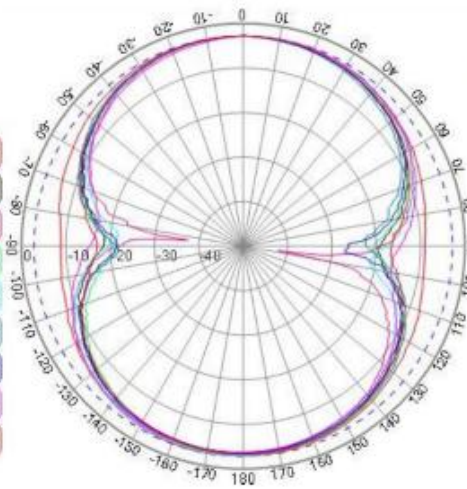
*\*Disclaimer: Technical specifications may subject to change without prior notice*

## WIFI Antenna



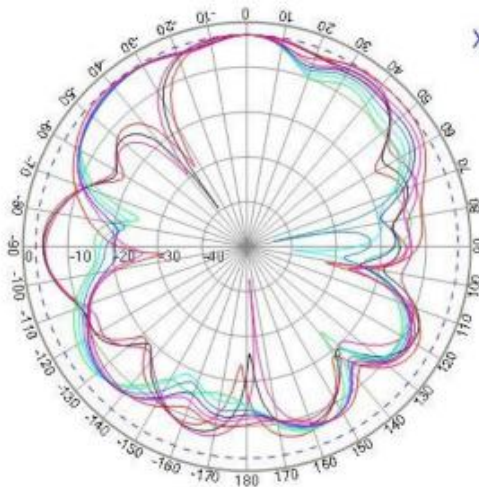
XY PLANE

- Freq: 2400
- Freq: 2410
- Freq: 2420
- Freq: 2430
- Freq: 2440
- Freq: 2450
- Freq: 2460
- Freq: 2470
- Freq: 2483



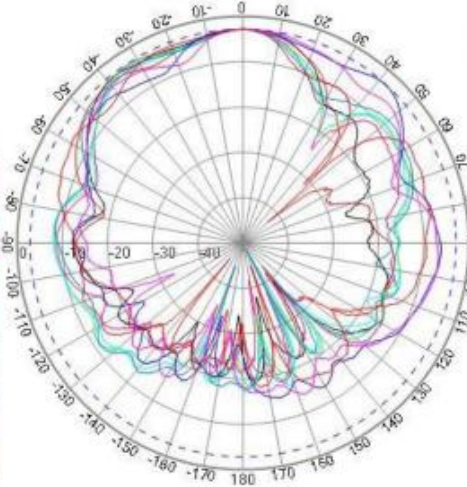
XY PLANE

- Freq: 4900
- Freq: 5000
- Freq: 5100
- Freq: 5200
- Freq: 5300
- Freq: 5400
- Freq: 5500
- Freq: 5600
- Freq: 5800



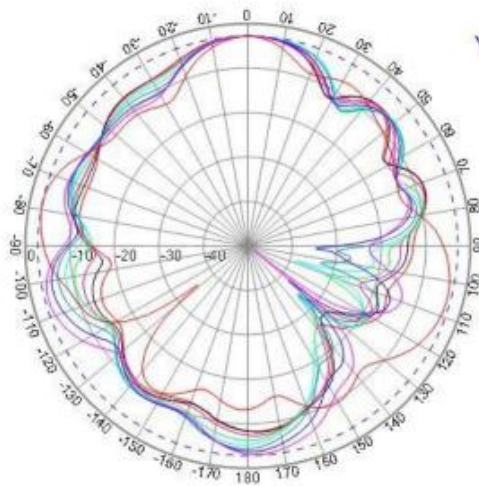
XZ PLANE

- Freq: 2400
- Freq: 2410
- Freq: 2420
- Freq: 2430
- Freq: 2440
- Freq: 2450
- Freq: 2460
- Freq: 2470
- Freq: 2483



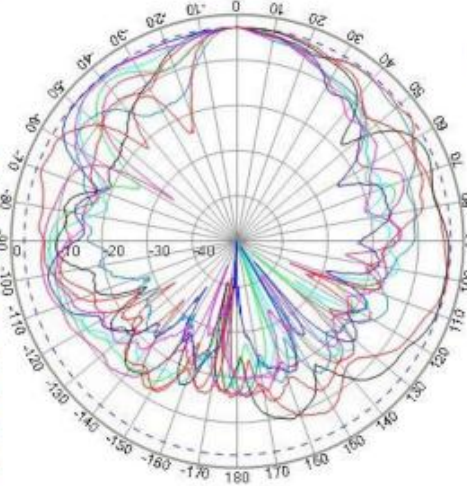
XZ PLANE

- Freq: 4900
- Freq: 5000
- Freq: 5100
- Freq: 5200
- Freq: 5300
- Freq: 5400
- Freq: 5500
- Freq: 5600
- Freq: 5800



YZ PLANE

- Freq: 2400
- Freq: 2410
- Freq: 2420
- Freq: 2430
- Freq: 2440
- Freq: 2450
- Freq: 2460
- Freq: 2470
- Freq: 2483



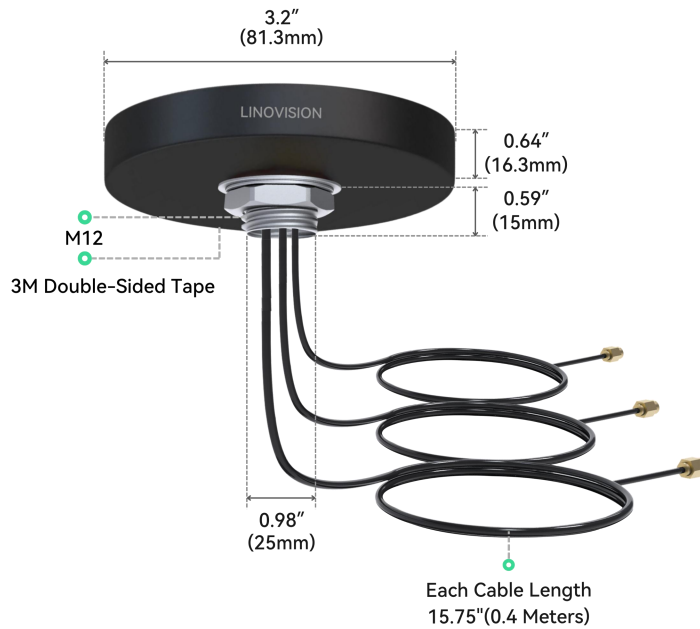
YZ PLANE

- Freq: 4900
- Freq: 5000
- Freq: 5100
- Freq: 5200
- Freq: 5300
- Freq: 5400
- Freq: 5500
- Freq: 5600
- Freq: 5800

*\*Disclaimer: Technical specifications may subject to change without prior notice*

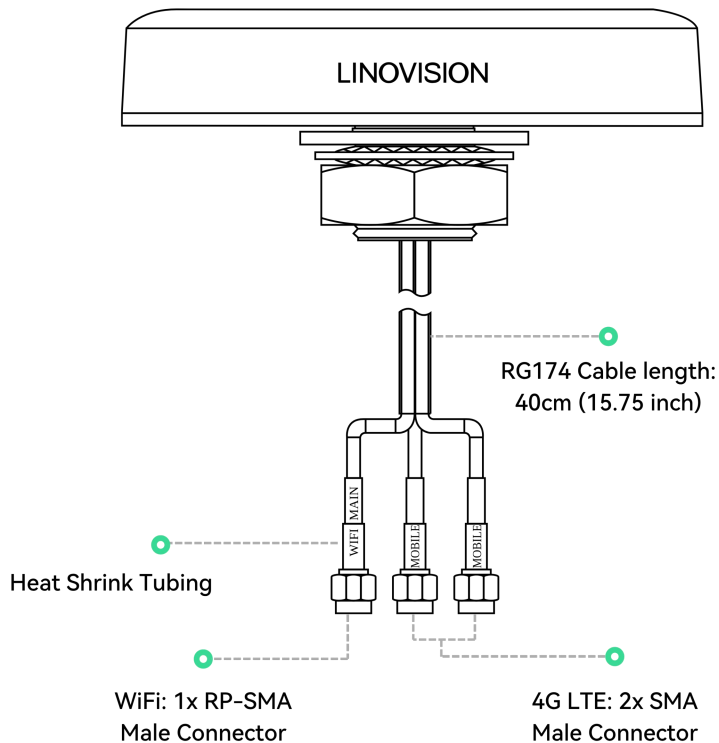
# LINOVISION

## Dimension

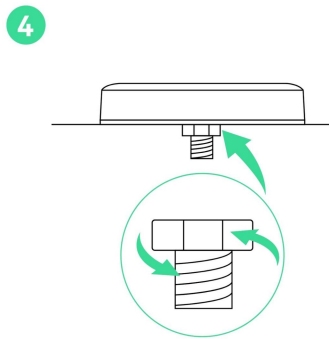
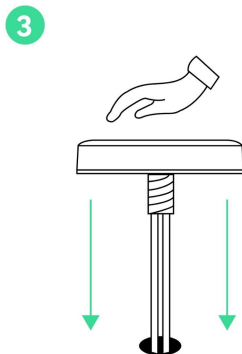
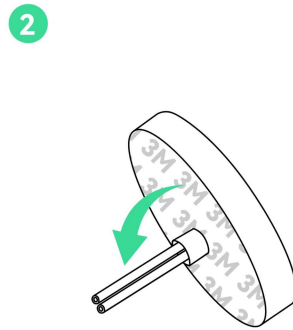
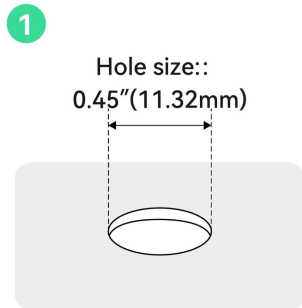


Weight: 535g (1.17 lb)

## Interface



## Installation



## Package Contents



ANT-4GCOMBO3



User Manual