

LINOVISION

One Port Gigabit 30W Outdoor PoE Extender **Quick Guide** (POE-EXT3001GP)



Quick Guide

Overview

POE-EXT3001GP is a 30W Gigabit long-distance waterproof PoE extender with 2×10/100/1000Mbps RJ45 ports. It receives PoE input from a PSE device and delivers PoE output to a PD device such as an IP camera or wireless AP. Supporting IEEE802.3af/at standards, it requires no configuration and operates as plug-and-play. With industrial-grade IP67 protection and support for cascade deployment, it enables reliable PoE and data transmission over extended distances in harsh outdoor environments.

Note: This PoE extender is designed to extend PoE & Data transmission for PoE Device only. To use it with Non-PoE device, please activate this PoE Extender by connecting a standard PoE device first.

Package Contents

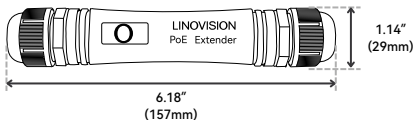


POE-EXT3001GP

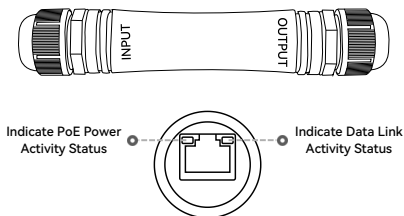


Quick Guide

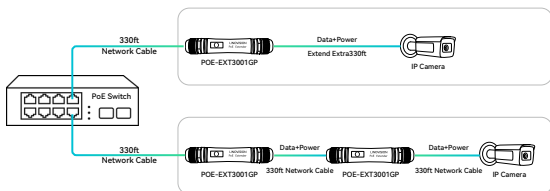
Dimension



Interface

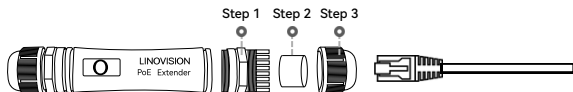


Application Diagram



- Strongly recommend 60W Hi-PoE Injector.
- The transmission bandwidth may be lowered to 100Mbps or even 10Mbps after 330ft.

Installation



Specification

Mode	POE-EXT3001GP
Ports	1*10/100/1000Mbps Input Port 1*10/100/1000Mbps Output Port
Network Media(Cable)	10BASE-T: UTP category 3,4, 5 cable (≤100m) 100BASE-TX: UTP category 5,5e cable (≤100m) 1000BASE-TX: UTP category 5,5e cable (≤100m)
Indicator	LNK/ACT (Green) PoE (Orange)
MAC Address Table	2K, Auto-learning, Auto-update
Jumbo Frame	15KByte
Packet Buffer	3Mbit
Transfer Mode	Store-and-forward
Power supply method	PoE Powered / Pass-Through
Input Voltage	DC 48~57V
POE Pin Assignment	1/2 (+) 3/6 (-)
Dimensions (L*W*H)	157*29*29mm (6.18 * 1.14 * 1.14 inch)
Operating Temperature	-10 °C ~ 50 °C (-50 °F ~ 122 °F)
Storage Temperature	-40 °C ~ 70 °C (-104 °F ~ 158 °F)
Operating Humidity	10% ~ 90% non-condensing
Storage Humidity	5% ~ 90% non-condensing
MTBF	>100000 hours
Weather Rating	IP67
Weight	80g (0.18lb)