

POE-SW504GD

DC 9-57V Input Mini Solar PoE Switch with 2 PoE+ Ports, 1 High PoE+ Port and 1 Passive 24V PoE Port



Outstanding Features

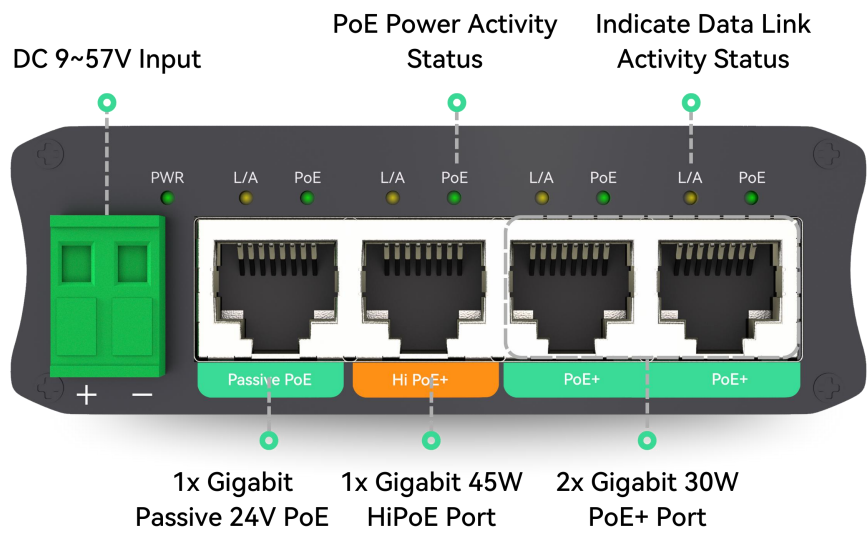
- Supports DC input from 9 to 57V using a built-in voltage booster, provides 2× IEEE 802.3af/at PoE, 1× 45W High-PoE and 1× 24V passive PoE ports.
- Rugged all-metal housing, DIN-rail mountable, compact dimension 83 × 26 × 64 mm (3.27 × 1.02 × 2.52 in), ideal for tight spaces like electrical cabinets, solar control boxes or outdoor enclosures.
- 45W High-PoE port for devices exceeding regular standard IEEE802.3at PoE+, such as multi-lens PTZ cameras, high-speed domes, LED-illuminated models.
- 24V Passive PoE port for wireless bridges and other passive-PoE devices, no extra injector required.
- Total power budget of 50W at 12V and 100W at 24V to meet power requirements in solar, RV and remote surveillance environments.

Specifications

Mechanical	
Enclosure Material	Aluminum
Dimensions (WxDxH)	83 × 26 × 64 mm (3.27 × 1.02 × 2.52 in)
Weight	0.159 kg (0.35 lb)
Installation	DIN-rail
Interface	
network	4 * 10/100/1000 Mbps RJ45 PoE Ports
DC input	DC 9-57V, 2-pin terminal block
Ethernet	
PoE Output	IEEE 802.3 af/at 45W Hi-PoE 24V Passive PoE
Mode A PoE Port	IEEE 802.3 af/at Hi-PoE
Passive PoE Port	DC 24V 4/5 (+), 7/8 (-)
PoE Budget	50W (DC 12V Input) 100W (DC 24V Input) 100W (DC 48V Input)
MAC Address Table	8K
Packet Buffer	1Mbits
Packet Length	10Kbytes
Switching Capacity	10Gbps
LED Indicators	
PWR	10Gbps
L/A	Link/Activity
PoE	Power over Ethernet
Environment	
Operating Temperature	-40 °C to 75 °C (-40 °F to 167 °F)
Storage Temperature	-40 °C to 85 °C (-40 °F to 185 °F)
Humidity	0% to 95% non-condensing
Surge Protection	1500V
Electrostatic Standard	HBM ±2000V, CDM ±750V

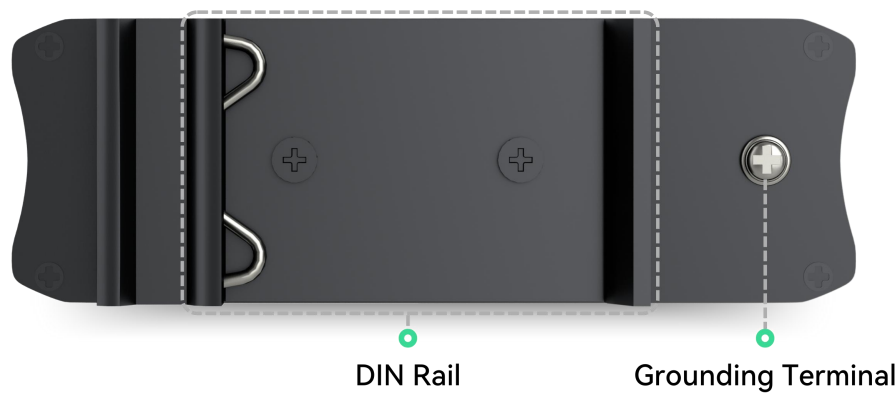
Interface

Front View



Rear View

Rear View

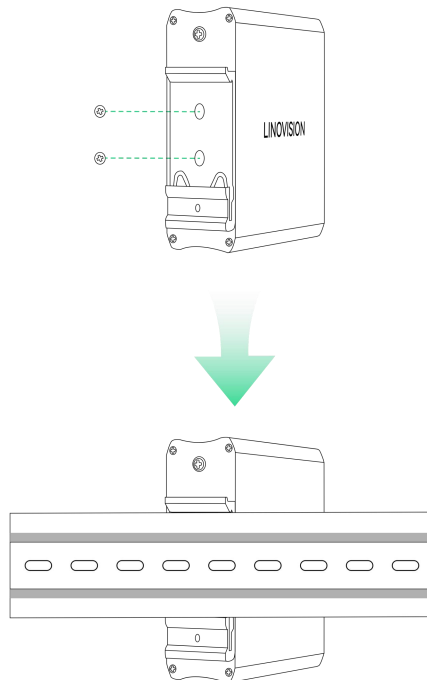


Dimension



Weight: 159g (0.351 lb)

Installation



Package Contents



POE-SW504GD



DIN-Rail Mounting Accessory



Quick Guide

**Disclaimer: Design and specifications are subject to changes without prior notice.*