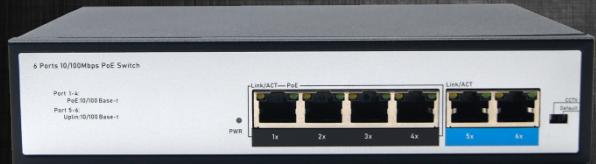
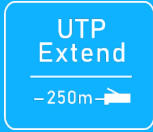




# 4-Port 100Mbps PoE Switch with 2 Ethernet Uplink



POE-Switch0604

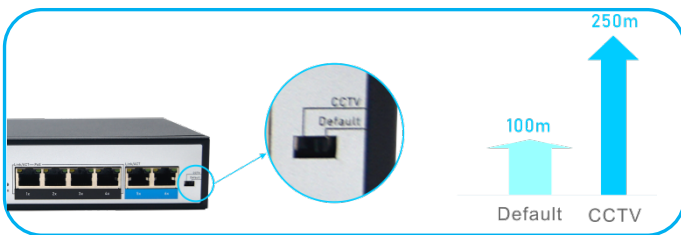


## Key Features:

- Ports:** Provide 4\*10/100Mbps PoE ports and 2 \*100Mbps Uplink
- PoE Standard:** IEEE802.3af/at Power over Ethernet (PoE) Compliant
- Total Power:** Total power budget of 65W and 30W for all single PoE ports
- Self-adaption:** RJ45 port supports 10/100Mbps Auto MDI/MDIX
- Extend Mode:** Extend PoE up to 250m on one single cable
- Wide Application:** Designed for Wifi AP and IP Security camera.VoIP etc
- Surge protection:** Protect the device from lightning surges and others electrical hazards
- Considerate Design:** Exquisite compact size with fanless design
- Easy to use:** Plug and play, No configuration required

## Versatile PoE Port

Featuring 4\* 10/100Mbps PoE ports which support IEEE802.3af/at standard and 2 \* 100Mbps Uplink ports. the PoE switch provides Maximun power budget of 65W and 30W for single PoE ports sepectively,allowing users to have several different Networking products configured

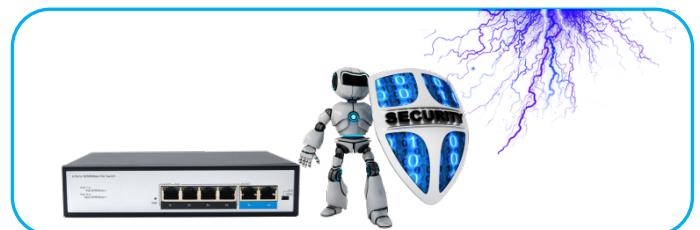


## Flexible Extend Mode

With the extend mode, the PoE Switch Series is able to offer more flexible choices for long range transmission, extending the distance up to 250m, which is greatly helpful to bring better user experience.

## Surge Protection Design

Reaching 4KV surge protection, the PoE ports owns the capacity to keep the PoE Switch from lightning strikes and other electrical surges, offering reliable performance even in some harsh environments.



# POE-Switch0604

4-Port 100M PoE Switch with 2 Uplink

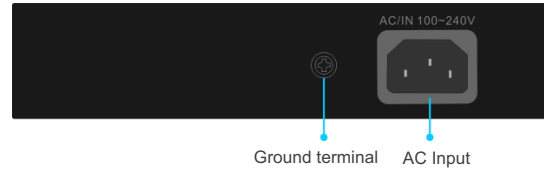
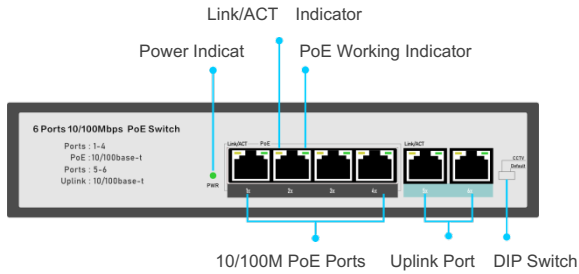
## Technical Datasheet

<b>Model</b>	<b>POE-Switch0604</b>	
<b>Hardware Specifications</b>		
Network Connector	6 10/100BASE-T RJ45 auto MDI/MDIX ports	
PoE Port	4 10/100Mbps POE PSE port	
LED Display	Power Indicator: PWR(green). Network Indicator: Link(yellow) PoE Working Indicator: PoE(green)	
Thermal Fan	Fanless Design	
LED indicators	Power Indicator: PWR(green). Network Indicator: Link(yellow) PoE Working Indicator: PoE(green)	
Switch Architecture	Store and Forward	
Transmission model	IEEE802.3X full-duplex and Backpressure half-duplex	
Switch Performance	Backplane bandwidth	1.6Gbps
	Packet forwarding rate	1.25Mpps
	MAC address	4k
Power requirement	AC100-240V 50/60Hz DC52V/1.25A	
ESD Protection	4KV ESD	
Dimension(W×D×H)	202mm x 104mm x 44.5mm(7.95in x 4.09in x 1.75in)	
Weight	1Kg	
<b>Power over Ethernet (PoE) Specifications</b>		
Network standard	IEEE802.3i 10 BASE-T	
	IEEE802.3u 100 BASE-TX	
	IEEE802.3x Flow Control	
	IEEE802.3af Power over Ethernet	
	IEEE802.3at Power over Ethernet	
	IEEE802.3az EEE	
PoE Standard	IEEE 802.3af Power over Ethernet/PSE	
	IEEE 802.3at Power over Ethernet Plus/PSE	
PoE Supply Type	1/2(+), 3/6(-) End-span	
PoE Power Output	Per Port 52V DC, 300mA. max. 15.4 watts (IEEE 802.3af)	
	Per Port 52V DC, 600mA. max. 30 watts (IEEE 802.3at)	
PoE Power budget	65W	
<b>Environment</b>		
Environment specification	Operating temperature: -10℃~45℃, operating humidity: 10%~90%	
	Storage temperature: -20℃~70℃, storage humidity: 5%~95%	
Safety	FCC Part15 Class A,CE,RoHs	

# POE-Switch0604

4-Port 100M PoE Switch with 2 Uplink

## Interfaces



## Structure Diagrams



## Applications

