

## PWR-48V25A

AC 100–240V to DC 54V 2.22A 120W Power Supply Adapter



## Outstanding Features

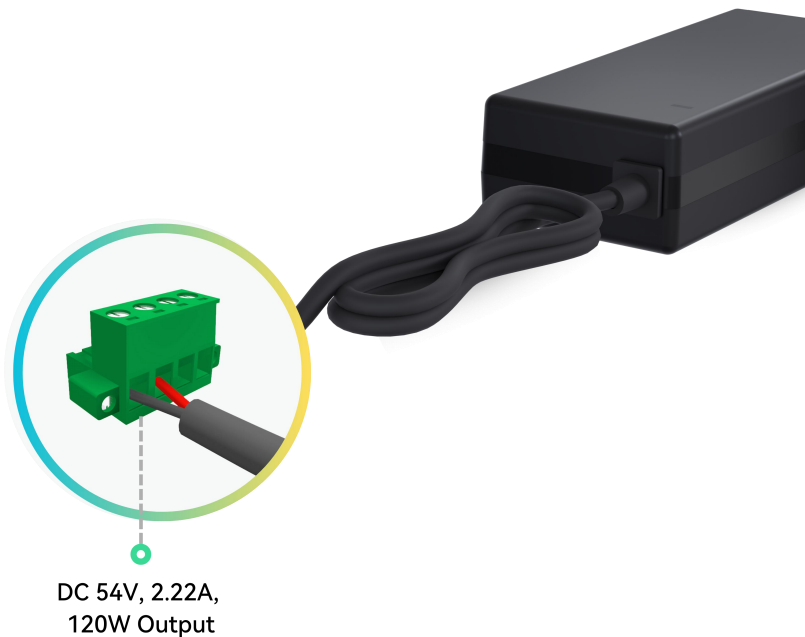
- **54V DC POWER SUPPLY:** AC 100–240V to DC 54V 2.22A, 120W Max.
- **UL LISTED:** UL Listed power adapter, Built-in Over Voltage, Over Current and Short Circuit Protection, reliable and safe.
- **TERMINAL INTERFACE:** Equipped with a 4-pin 5.08mm terminal block for secure and stable connections. Ideal for industrial and CCTV installation.
- **WIDE APPLICATIONS:** For DC powerd PoE switches, PoE NVRs, and PoE injectors. Compatible with lower-amperage adapters (e.g. 520mA, 1A, 1.25A, 1.5A, 1.875A, 2A), as devices only draw the current they need.
- **Backed by 3-year warranty,** US local technical support, and global after-hour support.

## Specifications

Input Voltage	100-240VAC
Output	54VDC, 2.22A, Max. 120W
Rated Input Voltage	220VAC
Input Voltage Range	100-240VAC
Input Current	<1.8A
Input Freq Range	50/60Hz
Voltage Regulation	54V DC $\pm$ 5%
Voltage with full load	54V DC $\pm$ 5%
Certifications	UL Listed (cULus), CE
Dimension (W $\times$ D $\times$ H)	58 $\times$ 140 $\times$ 34 mm (2.28 $\times$ 5.51 $\times$ 1.34 in)
Weight	315 g (0.694 lb)
Work Temperature	-10°C ~ 55°C (14°F ~ 131°F)
Storage Temperature	-40°C ~ 70°C (-40°F ~ 158°F)
Humidity	Up to 95% RH (Non-condensing)

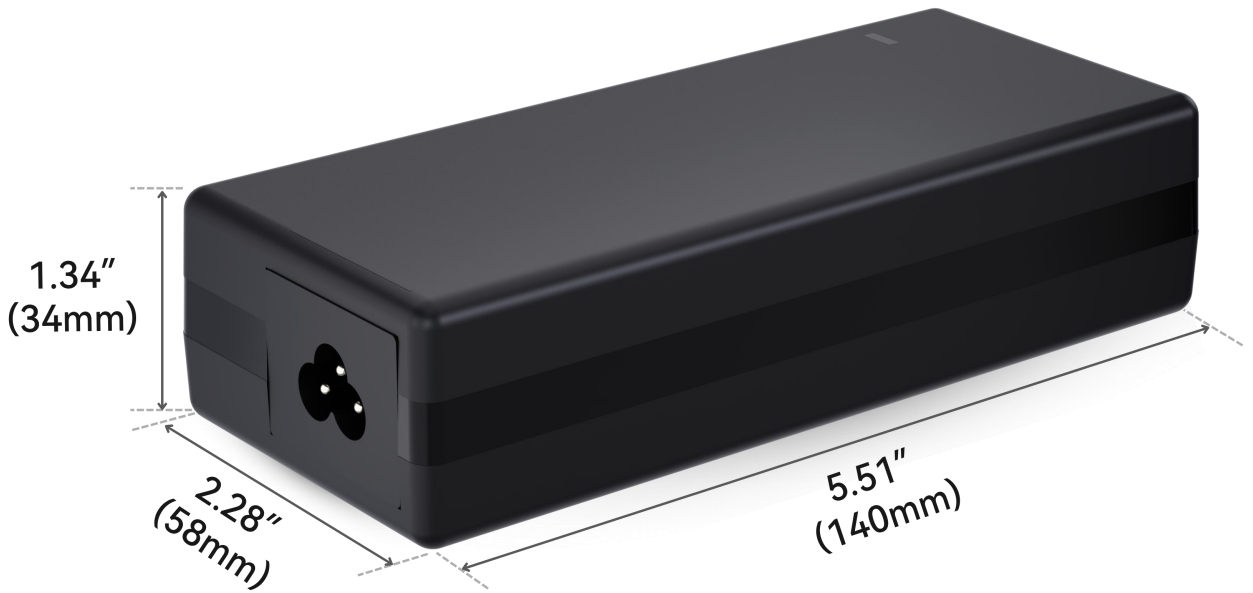
## DC Output Interface

The default interface is 4 pin 5.08mm terminal. You can also remove the terminal and connect directly to the PoE Switch terminals with wires.





## Dimension



Weight:315g (0.694 lb)

## Package Contents



120W Power Supply Adapter



Charging Cable



User Manual